



CITY OF CAPE TOWN
ISIXEKO SASEKAPA
STAD KAAPSTAD



POTSDAM SUSTAINABILITY CAMPUS

From SANDPIT to CAMPUS

WCPDF Conference

SPE \ UPD \ USU – 4 June 2025

Making progress possible. **Together.**

Interlinked planetary crises...sustainability is more than a green agenda

War

Biodiversity Collapse

Climate Change

Recession

Covid



CITY OF CAPE TOWN
ISIXEKO SASEKAPA
STAD KAAPSTAD

<https://medium.com/@GreenManifesto/interlinked-planetary-crises-de3273b399f2>



Catch 22

(LAPI)

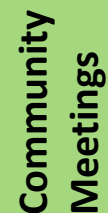
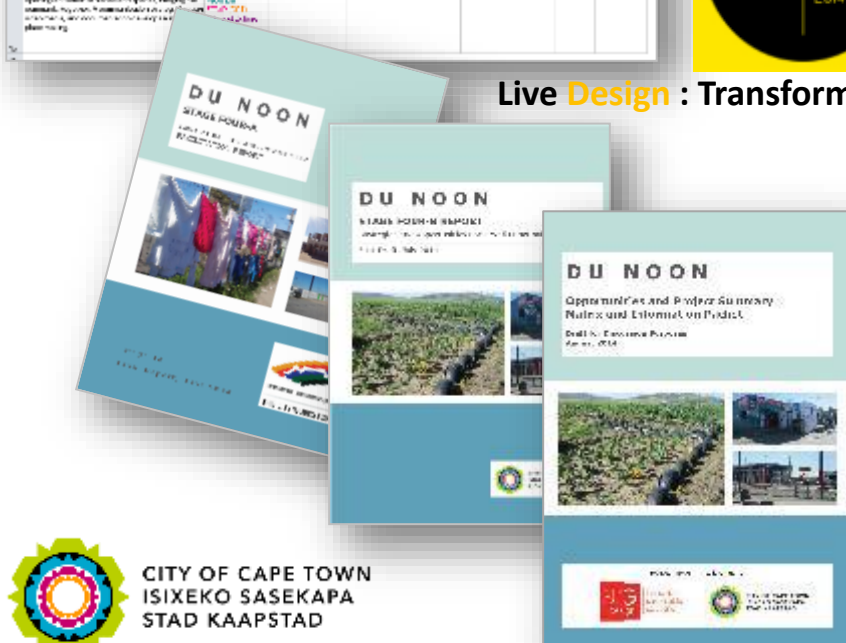
2013-17

[illegible]

Live Design : Transform Life



- Opportunities evaluation
- World Design Capital links & exposure
 - co-design workshops
- *Mayoral Portfolio for Urban Sustainability (MAPS) 2016-2020*



Sophakama Primary



ECD's



Street Committee



Taxi Association



Household Survey = 40 x 23 areas



Strategy towards 'new normal' @Dunoon

3 Strategies

9 sub strategies

provide the facilities, quality public realm, and services required in the settlement through a phased implementation approach

Built Environment

1. Focus on key precincts
2. Residential upgrade support programme
3. Upgrade infrastructure and services to medium density settlement standards
4. Improve access to facilities
5. Recover public sites

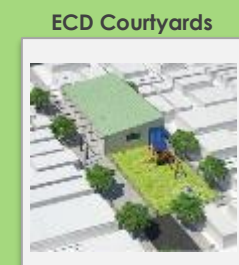
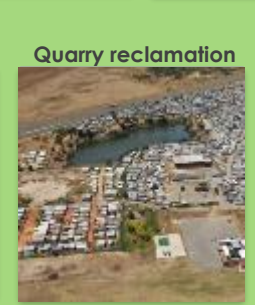
Economic & Vocational Development

6. Economic linkages & access to jobs
7. Integrated community and vocational development programmes
8. Sustainable resource management

Crime prevention and safety response

9. Crime prevention & safety response

Dunoon PIF: 12 Key Priority Projects - 2017

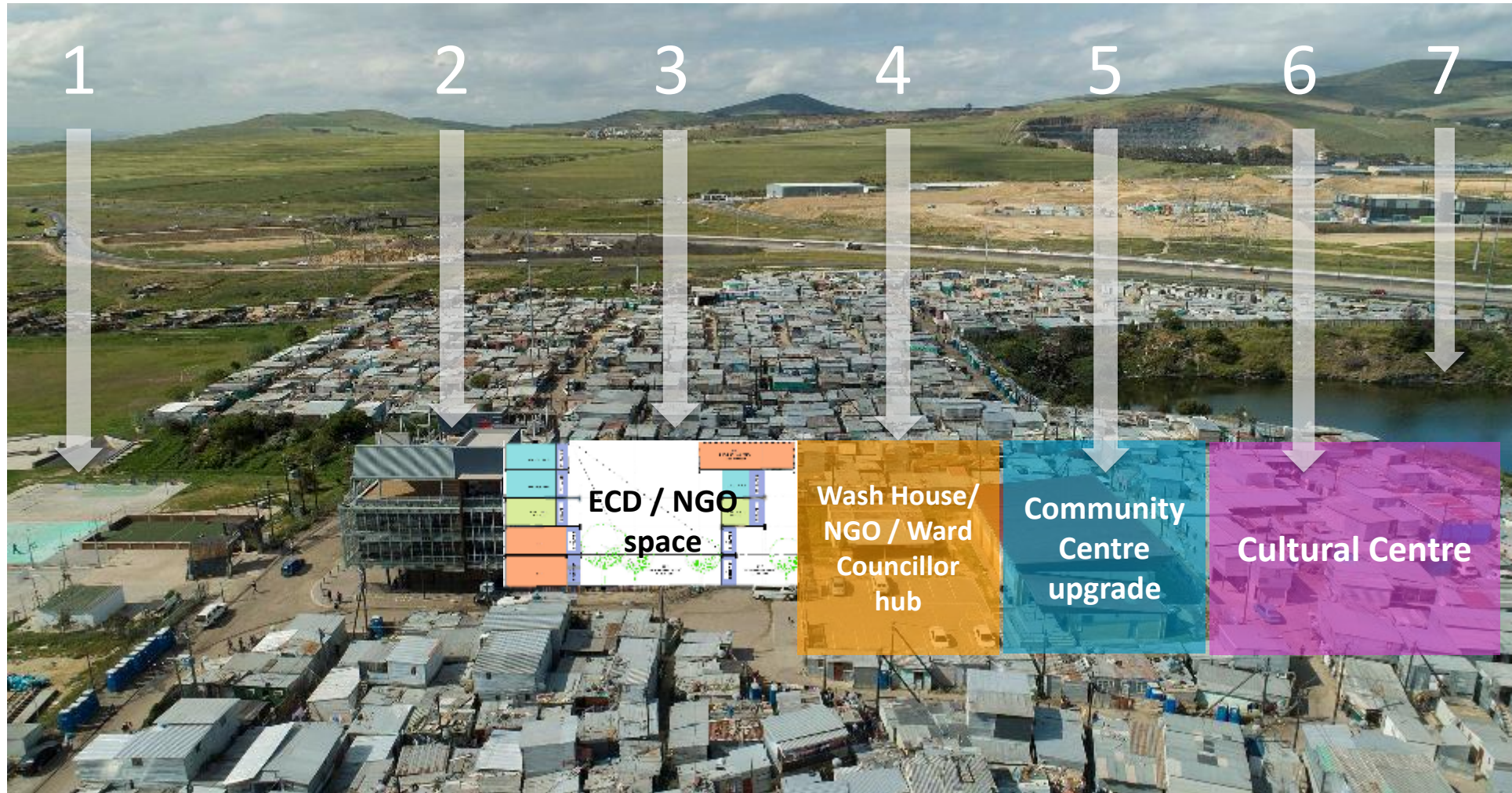


Let's start at the Learning and Innovation Precinct – integrated approach to SDGs



CITY OF CAPE TOWN
ISIXEKO SASEKAPA
STAD KAAPSTAD

Let's start at the Learning and Innovation Precinct – integrated approach to SDGs

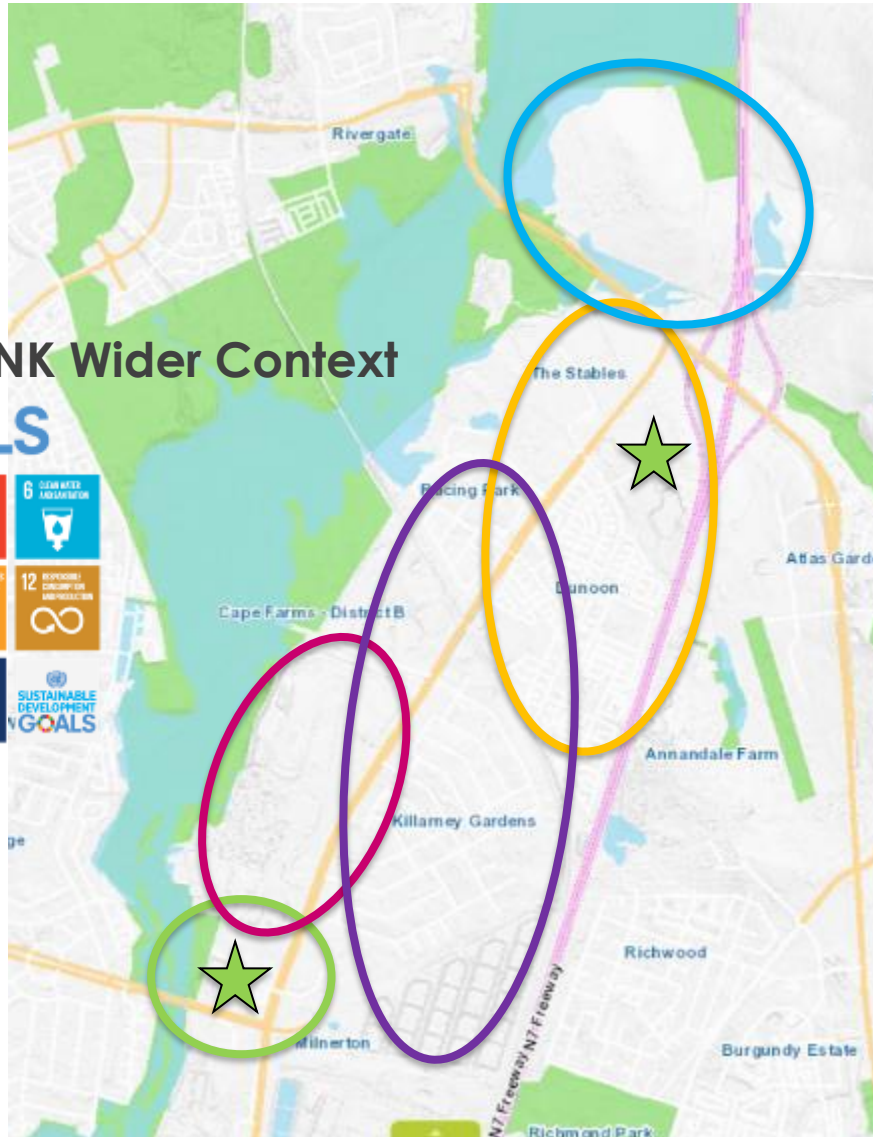


The Wider Integrated Urban System

1. Farming
2. Housing
3. Killarney racing
4. Industry
5. Potsdam Campus

THINK Wider Context

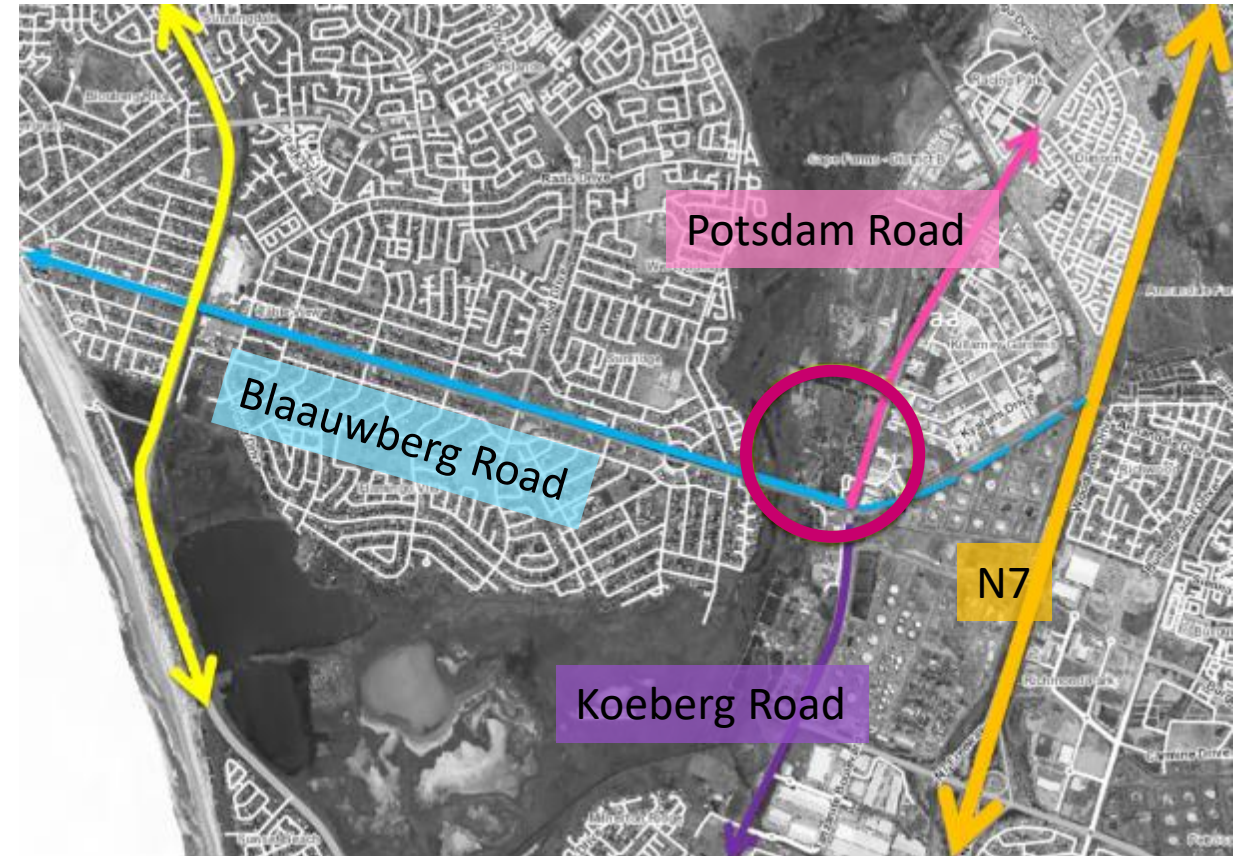
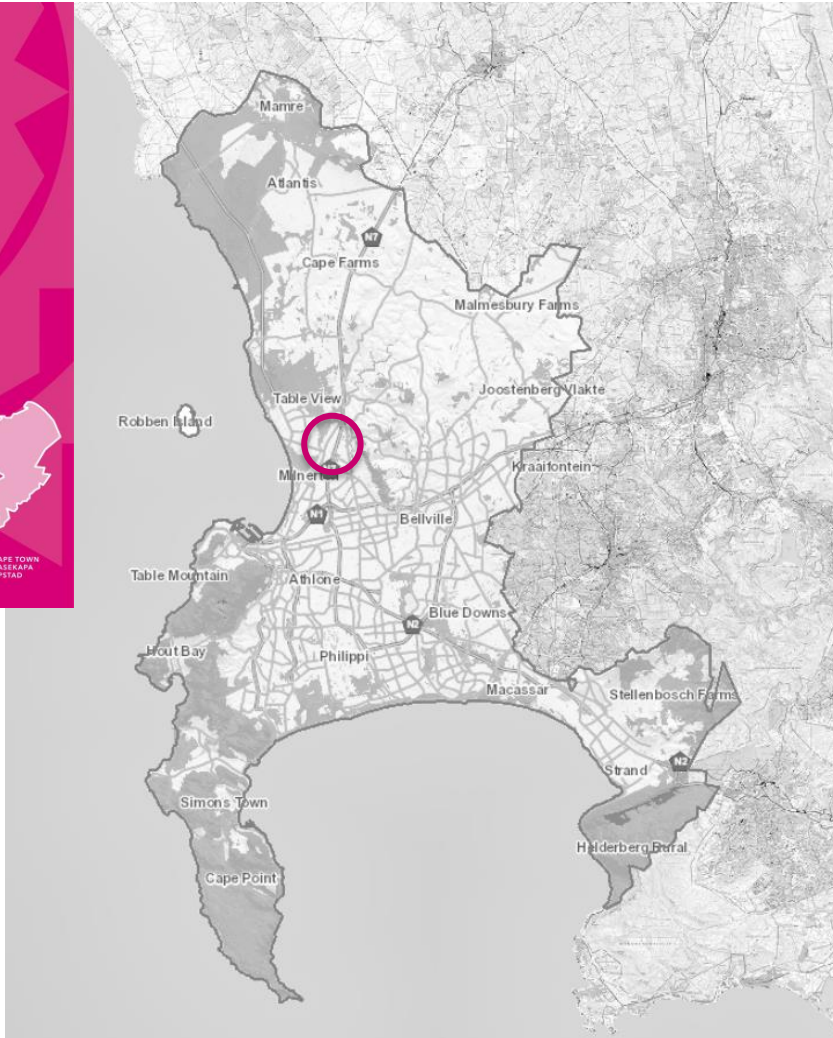
SUSTAINABLE DEVELOPMENT GOALS



CITY OF CAPE TOWN
ISIXEKO SASEKAPA
STAD KAAPSTAD



Cape Town – Blaauwberg District – c/o Potsdam, Blaauwberg & Koeberg Roads



Potsdam 'Outspan' – Historical Context



The 'Potsdam Outspan' was located in the area of the present-day intersection of Potsdam, Koeberg and Blaauwberg Roads & was used as an **overnight resting place for farmers on their way to and from Cape Town.**



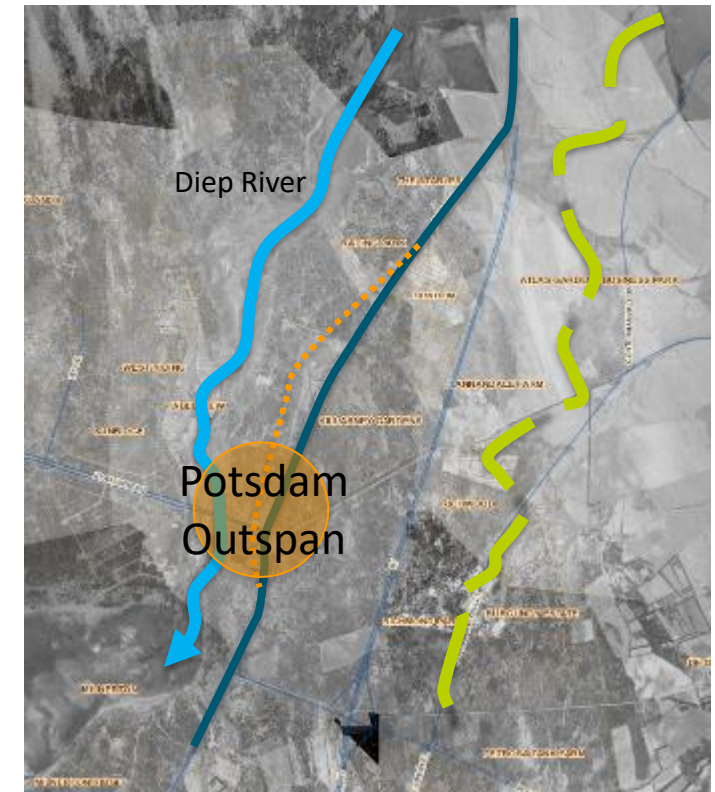
SUSTAINABLE DEVELOPMENT GOALS



Journey



On your way there...

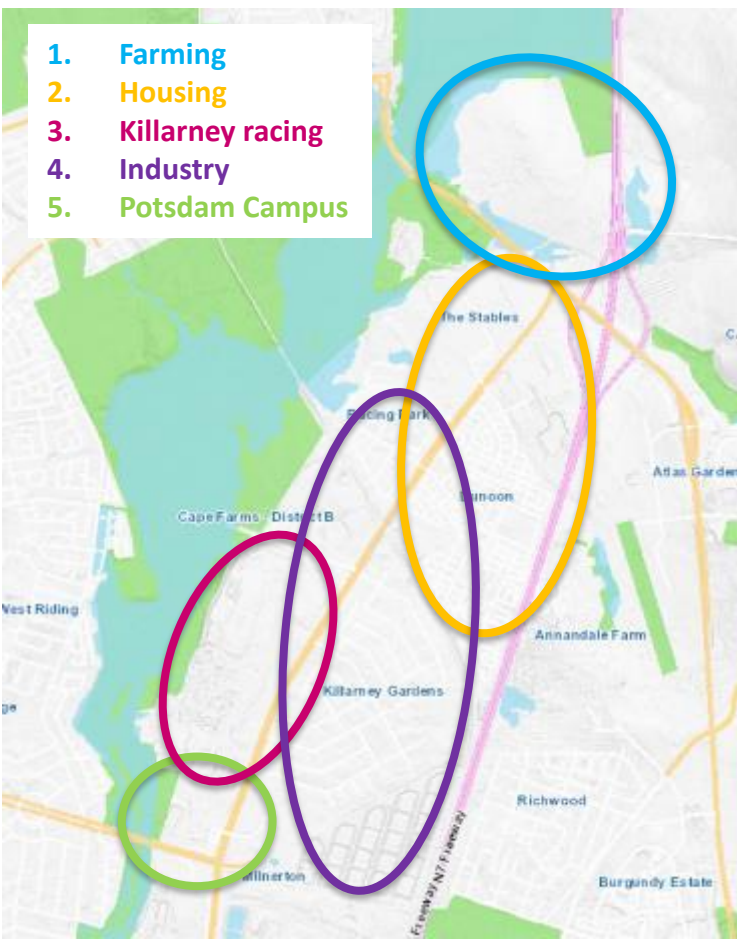


CITY OF CAPE TOWN
ISIXEKO SASEKAPA
STAD KAAPSTAD

Journey

On OUR way there...

Local Context and showcasing systems thinking



The “bigger picture” helps us understand better how urban areas function in the context of their supporting environments. This relates to social and economic sectors and require us to facilitate resources optimally.

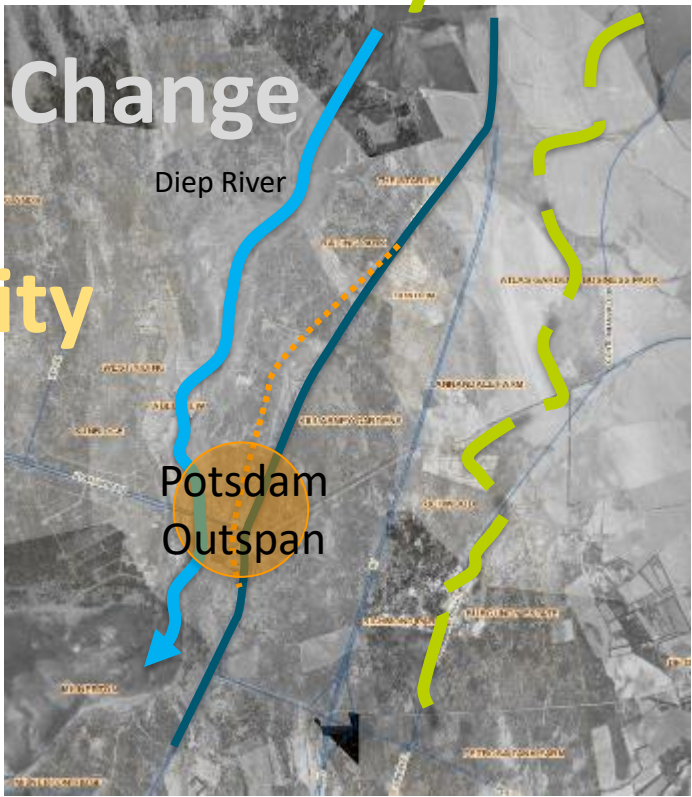


Circular Economy

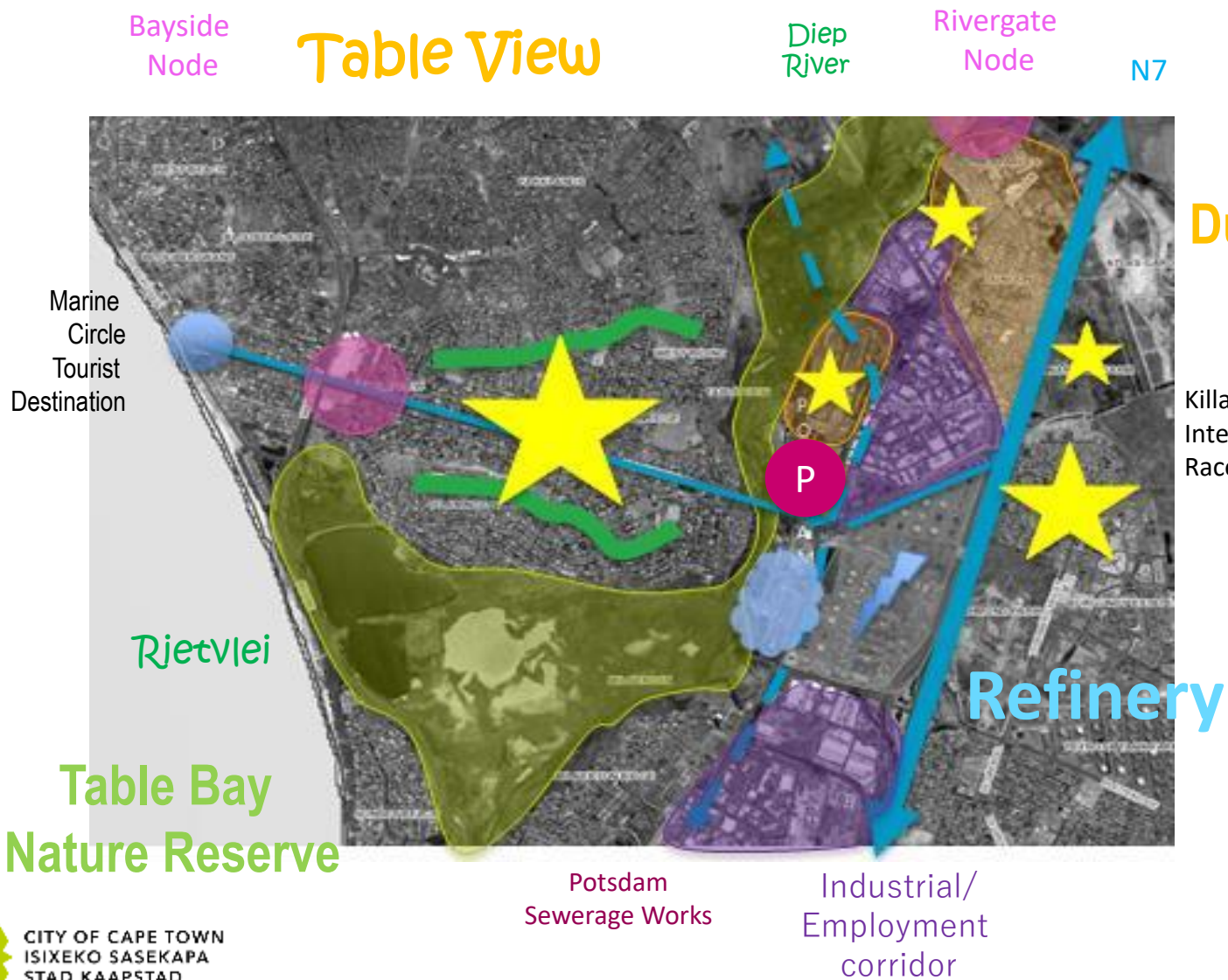
Climate Change

Resilience

Carbon Neutrality



Local Area Context: Site's role within its context



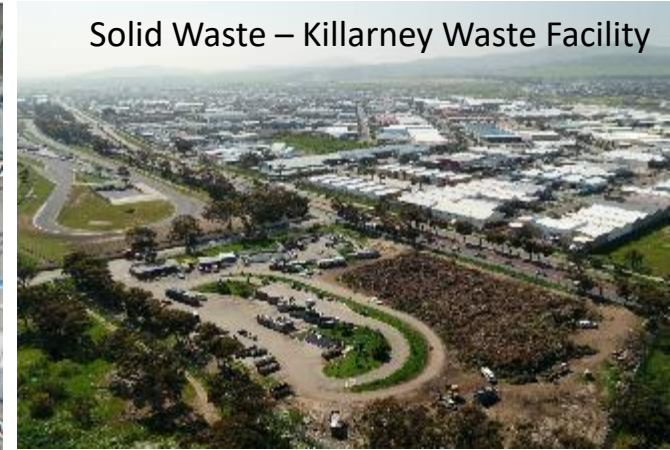
Site Boundaries and current use condition



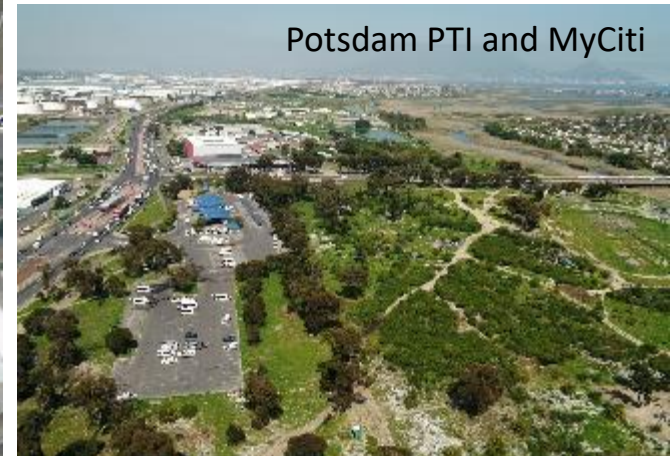
Diep River/ Table Bay Nature Reserve



CITY OF CAPE TOWN
ISIXEKO SASEKAPA
STAD KAAPSTAD

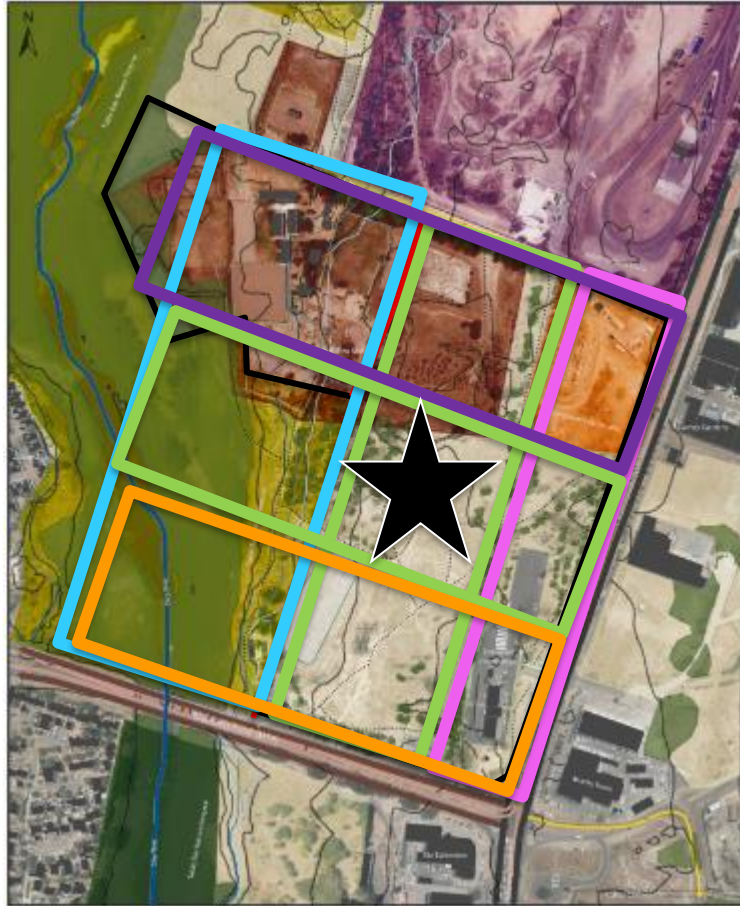


Solid Waste – Killarney Waste Facility



Potsdam PTI and MyCiti

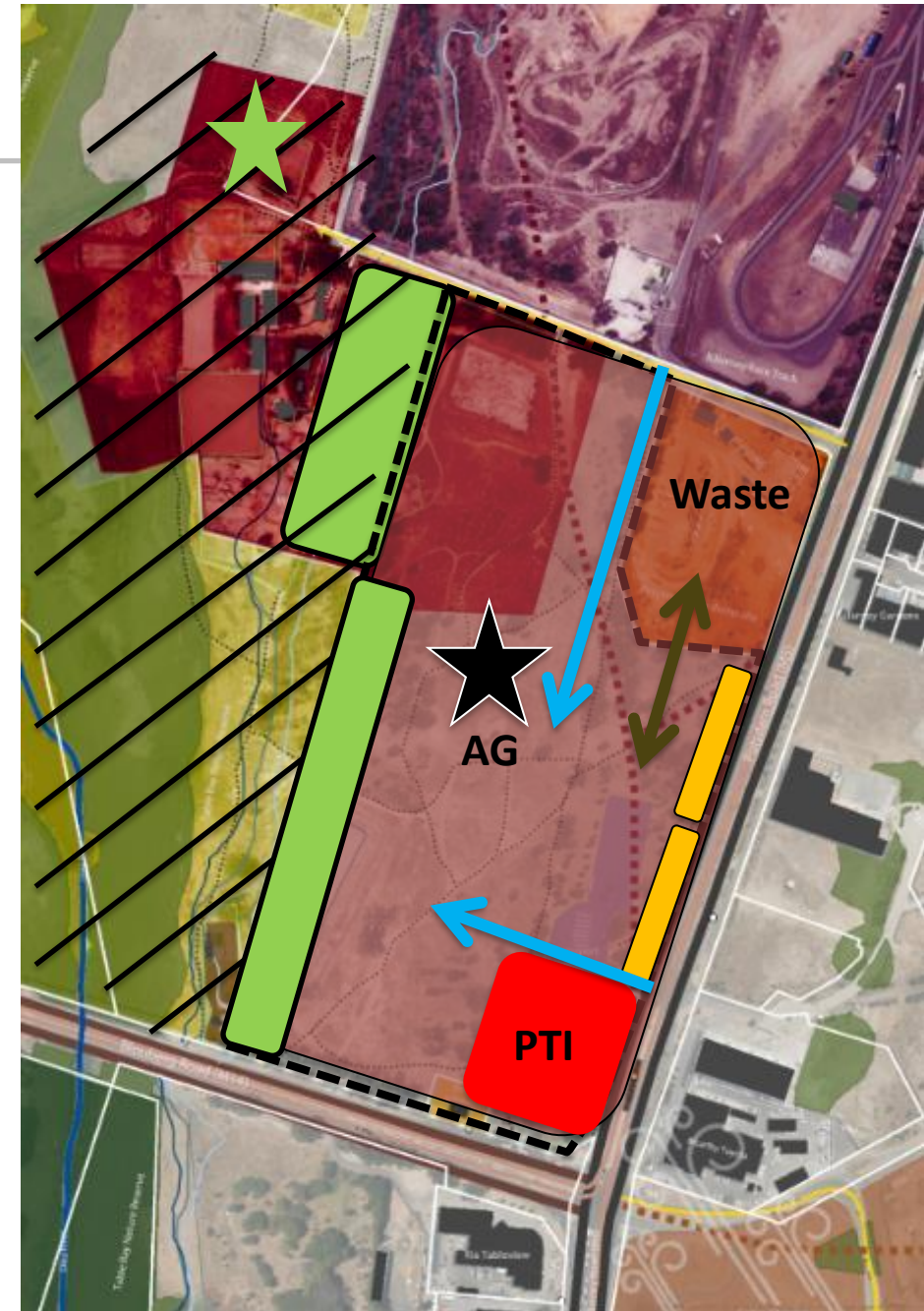
Contextual appropriateness



- a) Urban Zone
- b) Transition Zone
- c) Natural Zone



- a) Waste Zone
- b) Agriculture Zone
- c) Movement Zone



Site programme

Natural Edge

Peri-Urban Core

Commercial Edge



Waste as an asset

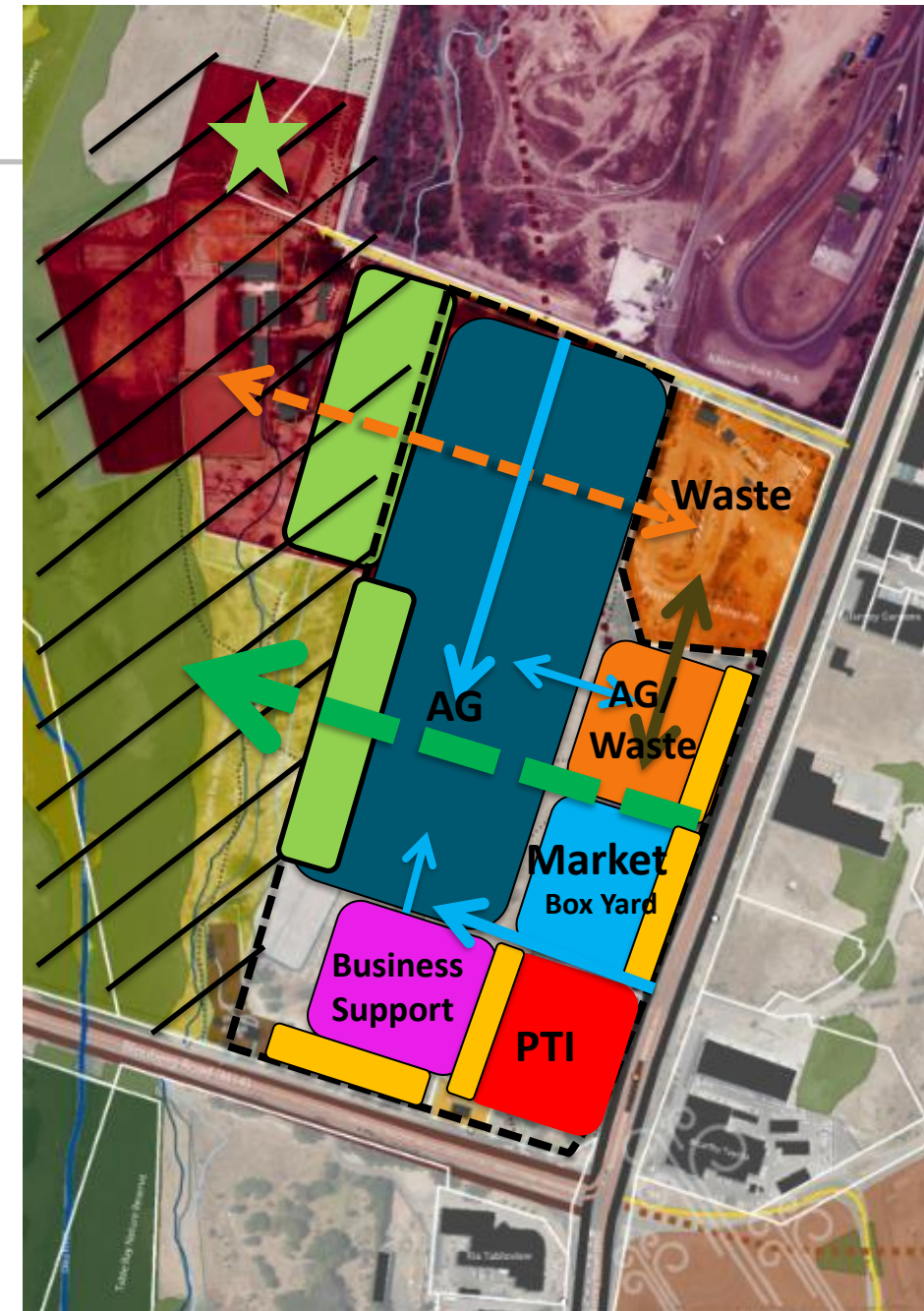


Transitioning as a mindset

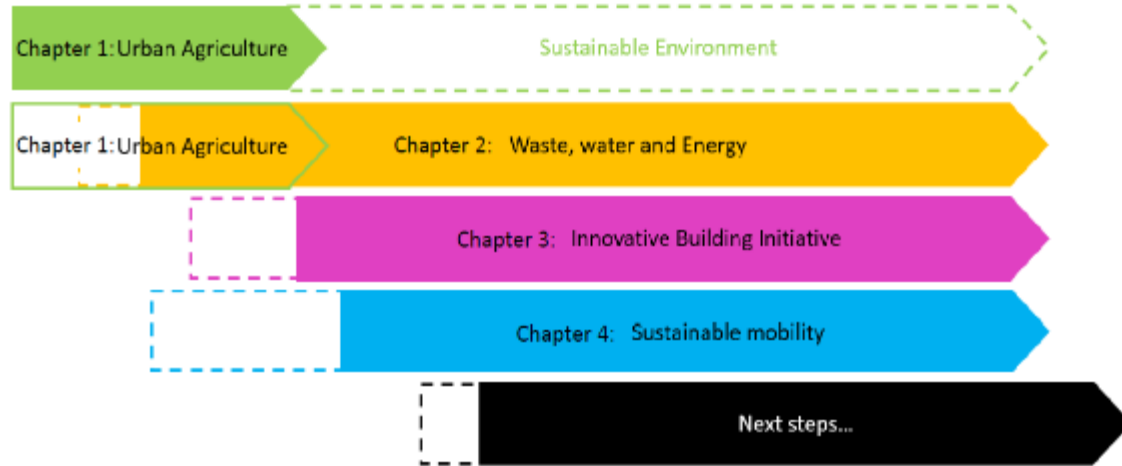


The importance of flow

Zones : Interrelationships



Potsdam Sustainability Campus



7 Objectives:

1. Utilising strategic site in City ownership to **showcase & demonstrate** urban sustainability
2. Unpack & unlock what Carbon Neutrality really means for the City and its citizens
3. Building **transversal & sustainable partnerships** with the wider sustainability fraternity
4. **Empowering local communities** about what sustainability & carbon neutrality means
5. **Creating a learning environment** for the City through evidence-based research & planning
6. Impact **policy** development
7. Unpacking sustainable **funding** opportunities



5 Chapters



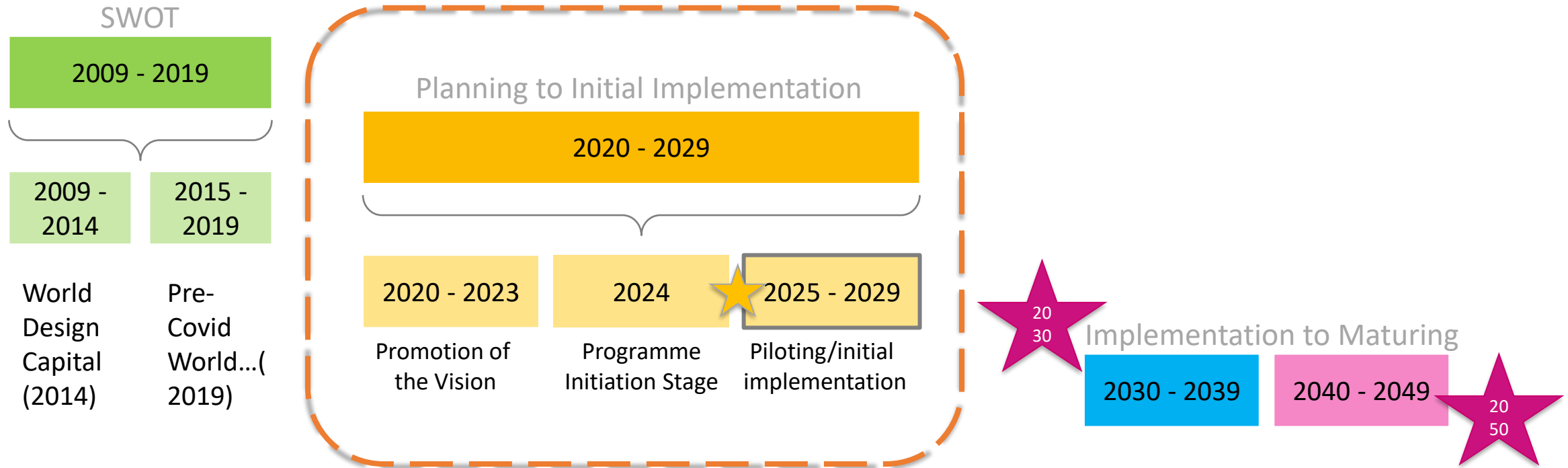
Sustainable Campus



Training & empowerment through local NGOs, alongside research & evaluation by key institutions

Living Lab

Programme Timescale

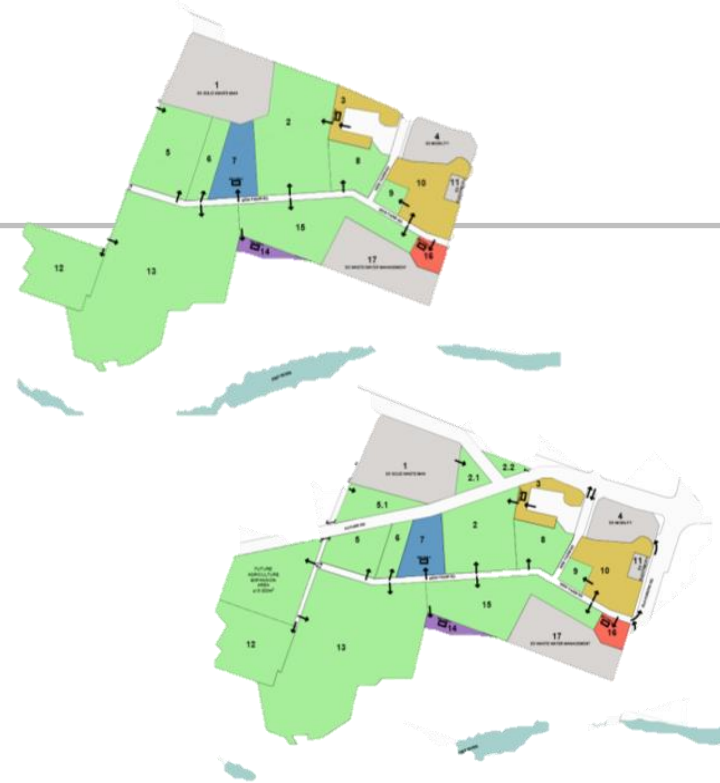


Baseline Infrastructure studies



- 1 Muni Infr Study
- 2 SUDS and Surface water Study
- 3 Groundwater Study
- 4 Mobility Study
- 5 NMT Masterplan
- 6 GeoTech
- 7 Land Survey
- 8 Soil Study
- 9 Heritage Study

Design Fees



Possible Koeberg Rd Extension



Sustainable Urban Drainage Systems

- A. Potsdam Development Framework Project - Indicative Program**
- 1.0 Project Ownership, Funding, Asset Management & Reporting
 - 2.0 Operation Projects, Reports & Initiatives - Community Development
 - 3.0 Education & Research
 - 4.0 Communication, Stakeholder Liaison Management & Special Events
- B. Potsdam Sustainability Chapters**
- 1.0 Urban Agriculture & Environmental
 - 2.0 Economic Infrastructure
 - 3.0 Sustainable Heritage
 - 4.0 Building & Construction Technology
 - 5.0 Mobility Infrastructure & Initiatives
- C. Ancillary Projects**

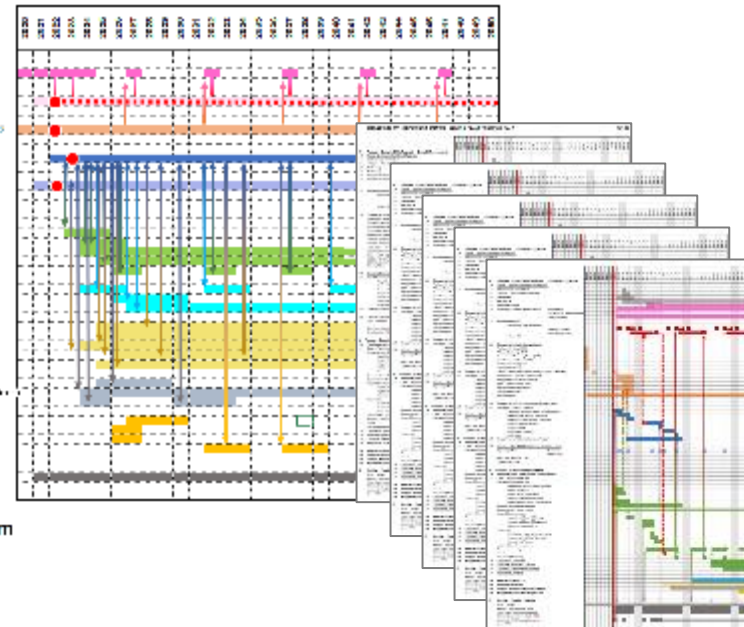


Figure 5.1: Indicative 2050 Vision Program



CITY OF CAPE TOWN
ISIXEKO SASEKAPA
STAD KAAPSTAD

Policy and Strategy Alignment: IDP

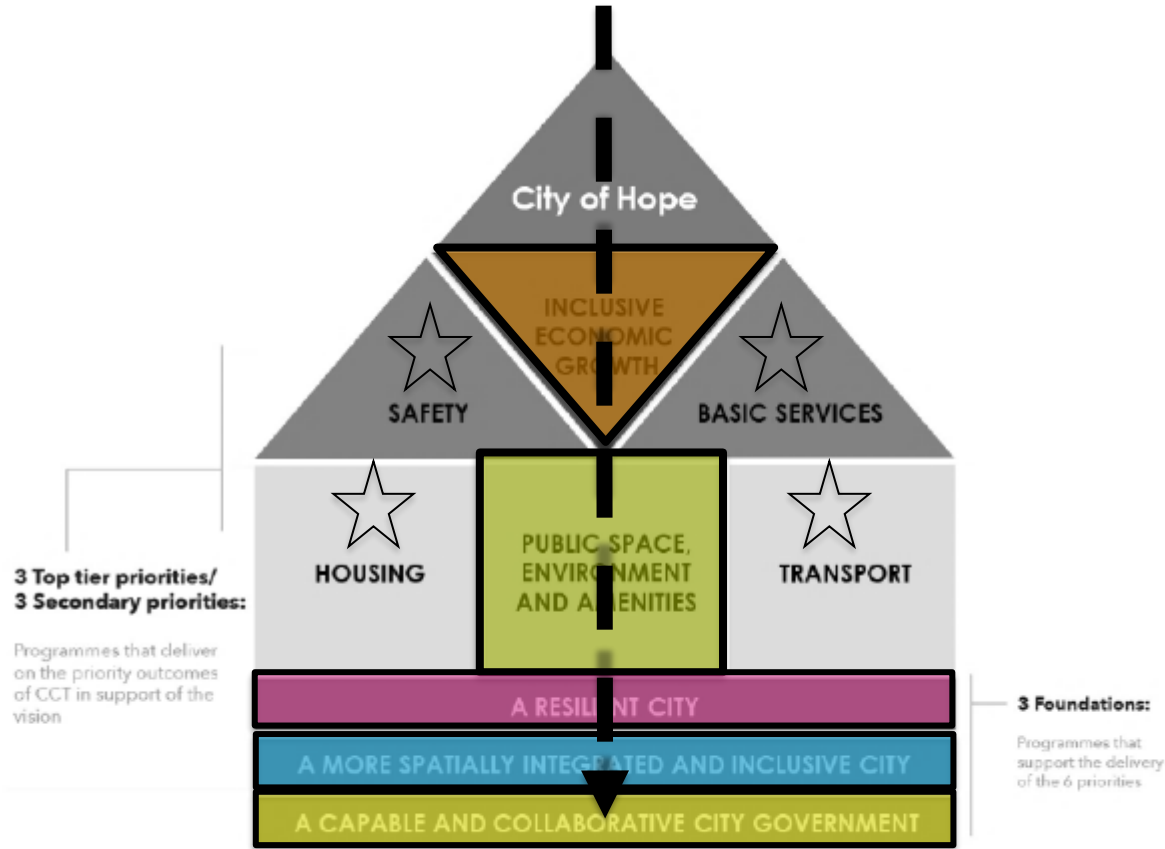


Figure 2: The Strategic Plan of IDP consisting of Priorities and Foundations that all supports the vision of a City of Hope

Providing a **City-owned exhibition platform** (living lab) for **experimentation** with a large array of sustainable practices, materials and technologies, where the City can **physically demonstrate** what the **impacts of various innovative approaches** coupled with **integrated design-thinking** can have on the **health** of Cape Town and its people.

This **cross-departmental/ governmental learning environment** will highlight that **prevention** is better than cure, that a sustainable and transversal approach can help meet our **SDGs and Climate Action targets** and that while **influencing** city-wide policies, planning and projects, it addresses the local area needs.

Low-Hanging fruits – key partnerships



Site security

Waste-2-Compost

Biodiversity,
Nursery &
Tree planting

Water
Hub/River
Buffer zone

Box Yards

Agriculture



CITY OF CAPE TOWN
ISIXEKO SASEKAPA
STAD KAAPSTAD

Progress in last 2 years

28 Sept'23 – Soft Virtual Launch to knowledge partners beyond the City, including sister-city of Nairobi's City County and EThekweni Municipality

Sep23



CITY OF CAPE TOWN
ISIXEKO SASEKAPA
STAD KAAPSTAD



Potsdam Sustainability Campus Launch

Progress in last 2 years

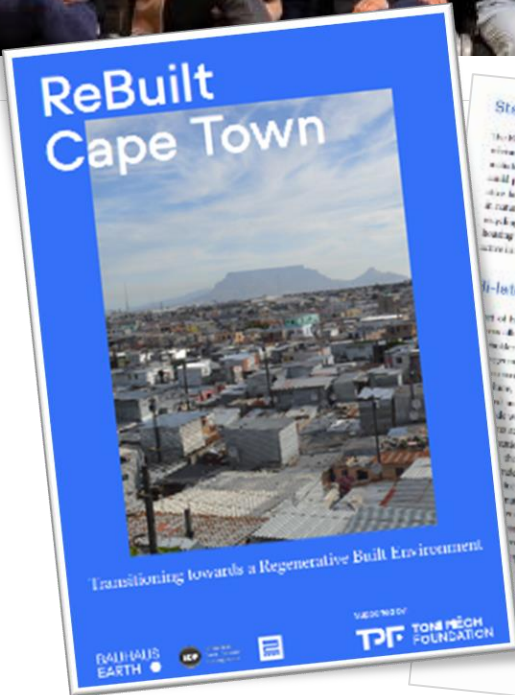
28 Sept'23 – Soft Virtual Launch to knowledge partners beyond the City, including sister-city of Nairobi's City County and EThekweni Municipality

Nov23



Sep23

11-18 Nov – Bauhaus Earth /Rebuilt Interchange with EDP, WCP at Potsdam/ Berlin, Germany



CITY OF CAPE TOWN
ISIXEKO SASEKAPA
STAD KAAPSTAD

Progress in last 2 years

28 Sept'23 – Soft Virtual Launch to knowledge partners beyond the City, including sister-city of Nairobi's City County and EThekweni Municipality

Nov23



Sep23

11-18 Nov – Bauhaus Earth /Rebuilt Interchange with EDP, WCP at Potsdam/ Berlin, Germany

30 Nov '23 Site walk and Workshop with Knowledge Partners



CITY OF CAPE TOWN
ISIXEKO SASEKAPA
STAD KAAPSTAD

Progress in last 2 years

28 Sept'23 – Soft Virtual Launch to knowledge partners beyond the City, including sister-city of Nairobi's City County and EThekweni Municipality

Nov23

Submission of initiative to the Corporate Programme Stage Gate: Initiation stage, the first for UPD, with approval in April 2024

Apr24

Sep23

11-18 Nov – Bauhaus Earth /Rebuilt Interchange with EDP, WCP at Potsdam/ Berlin, Germany


Dec23

Attained successful Completion of Corporate Programme Stage Gate: Initiation stage, the first for UPD,

30 Nov '23 Site walk and Workshop with Knowledge Partners



CITY OF CAPE TOWN
ISIXEKO SASEKAPA
STAD KAAPSTAD



CITY OF CAPE TOWN
ISIXEKO SASEKAPA
STAD KAAPSTAD

Corporate Gate Review Meeting
RECOMMENDATION REPORT | PROGRAMME

PROGRAMME DESCRIPTION

Programme ID / Initiative	CPI/0020087
Programme Description	Potsdam Sustainability Campus Overview
Stage Under Review	Initiation / Represent
Date of Session	2024/04/10

PROGRAMME STAGE GATE UNDER REVIEW

Initiate

Definition (business case)

Delivery (control point)

Transition (operation)

CASE	COMMITTEE MEMBERS	SCORE
Strategic Case	Andre Roux	2
Socio-economic Case	Paul Court	2
Procurement Case	Ben Peters	1
Commercial and Regulatory Case	Maurice Whare	1
Financial Case	Karen Fourie	3
Project Management Case	Mark Cawood	2
Technical and Engineering Case	Gerhard Venter	2

PROGRAMME TEAM	ROLE
Liesel Kruger-Fountain	PPD Programme Manager
Randall Christodoulou	Senior Project Manager
Erika Naudé	Director: Urban Planning and Design

SUPPORTIVE DOCUMENTS


Stage gate presentation	SHAREPOINT LINK LINK
Audio recording of session	
All corrective and action logs	

RECOMMENDATION

Deficiencies of concern identified that need to be addressed before the programme advance
It is recommended that the programme advance to the definition stage (next stage). The programme team is requested to address the identified actions and provide feedback to the committee in the next gate review.

WEIGHTED SCORE
2.00

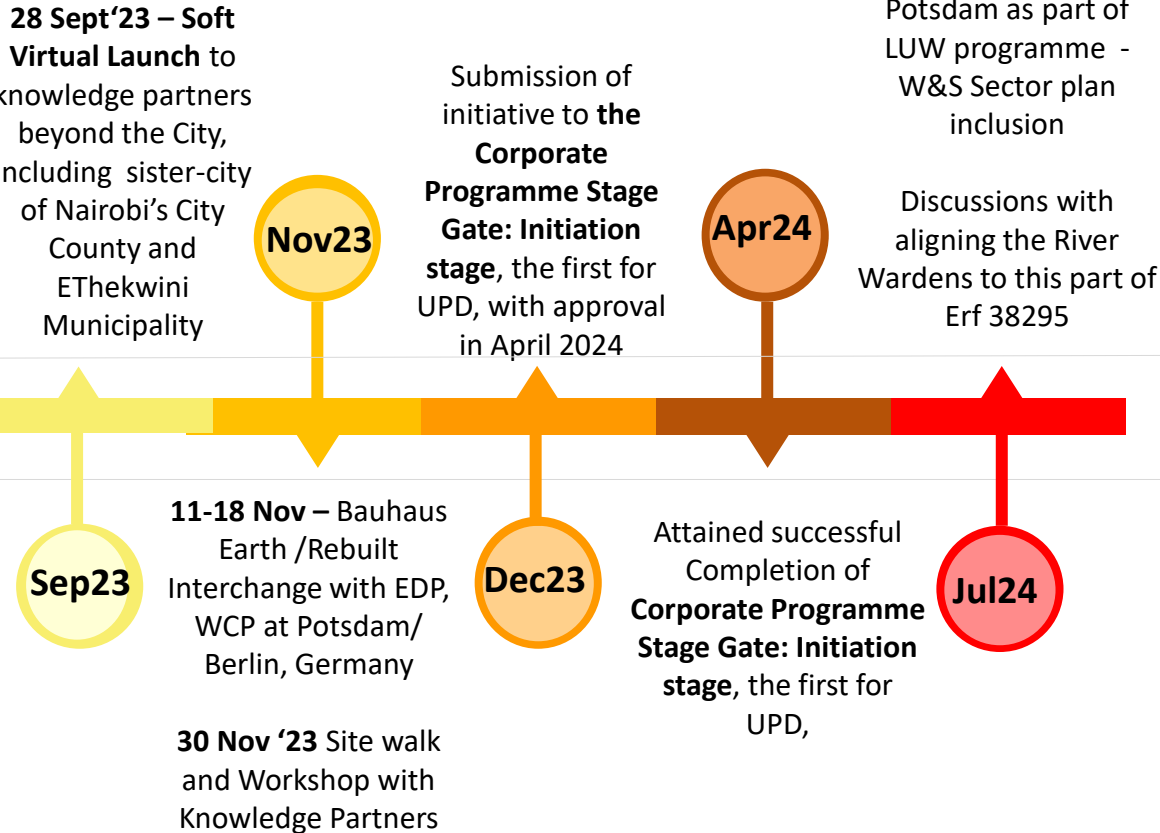
CHAIRPERSON APPROVAL:


BEN PETERS

☒ Approved / Completed
☐ Re-present / Review

Recommendation Report | Corporate Gate Reviews

Progress in last 2 years



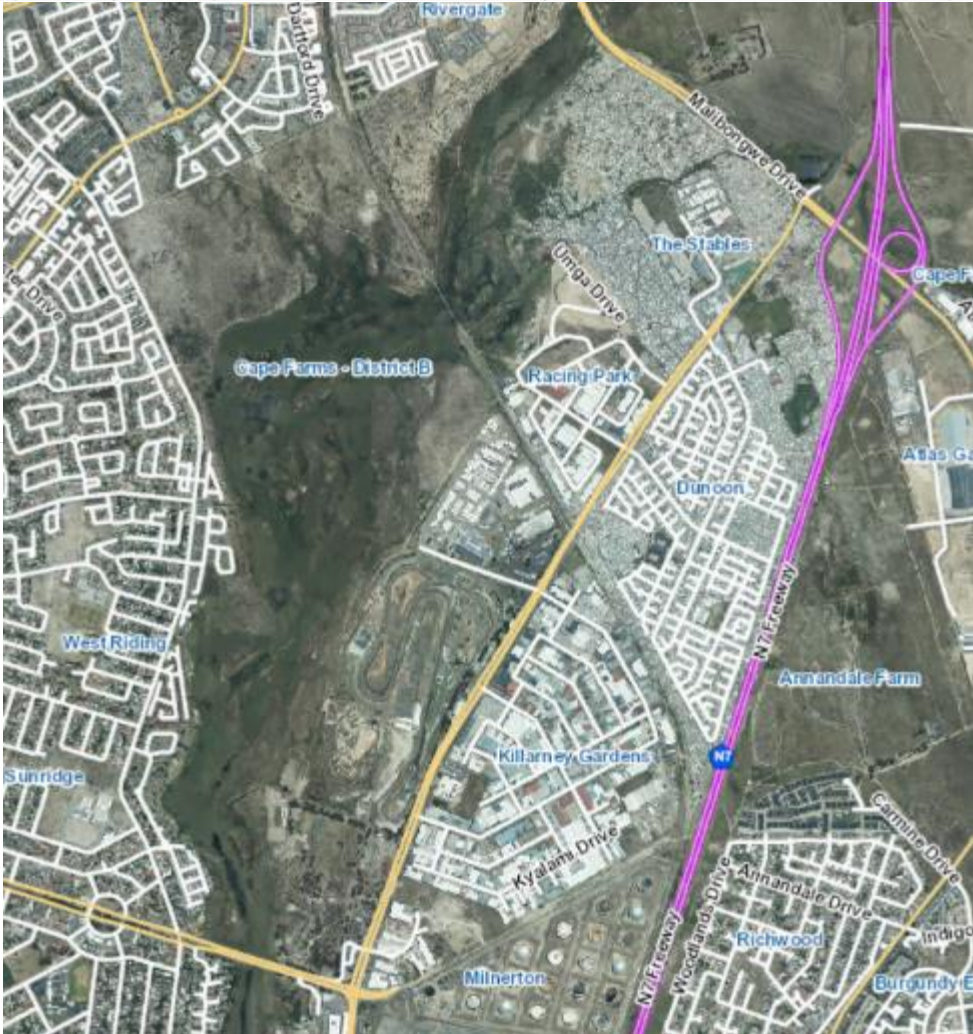
104, 113

River rehabilitation and enhancement of the spaces adjacent to the river integrating into local urban form, connect to the Potsdam sustainability campus initiative and nature reserve.

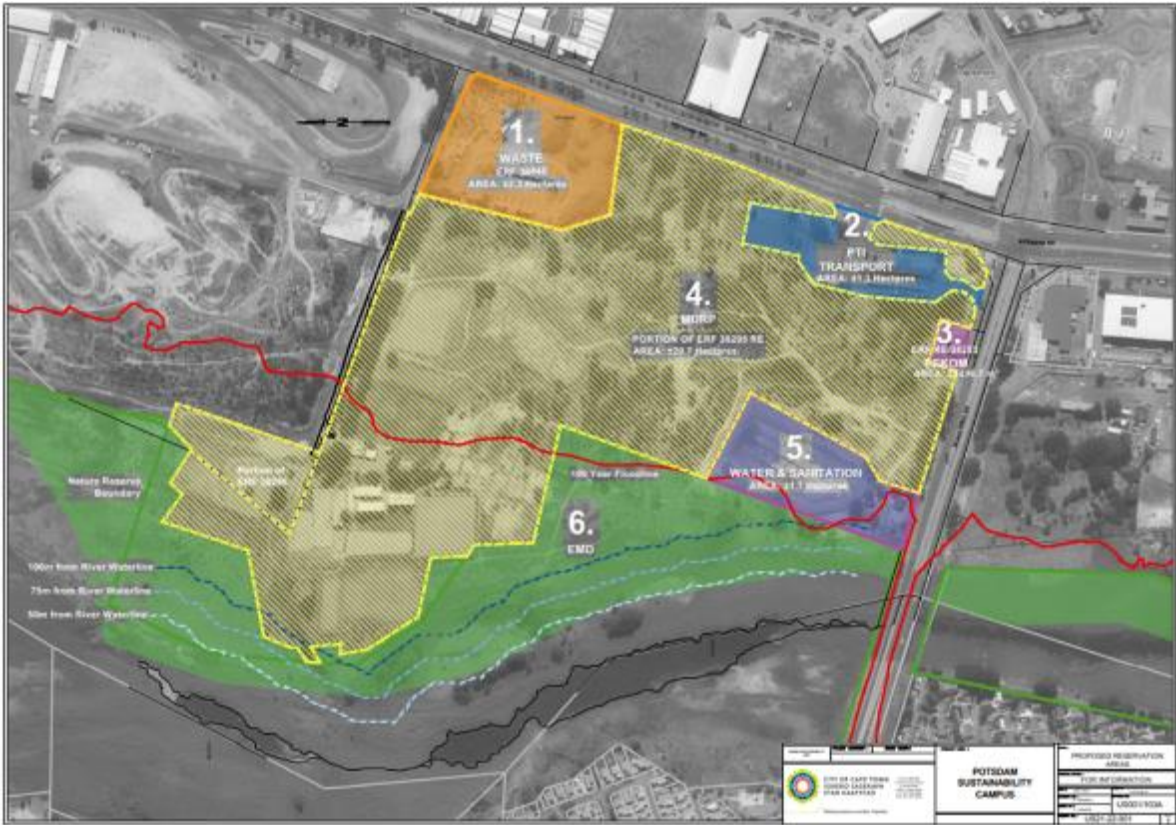
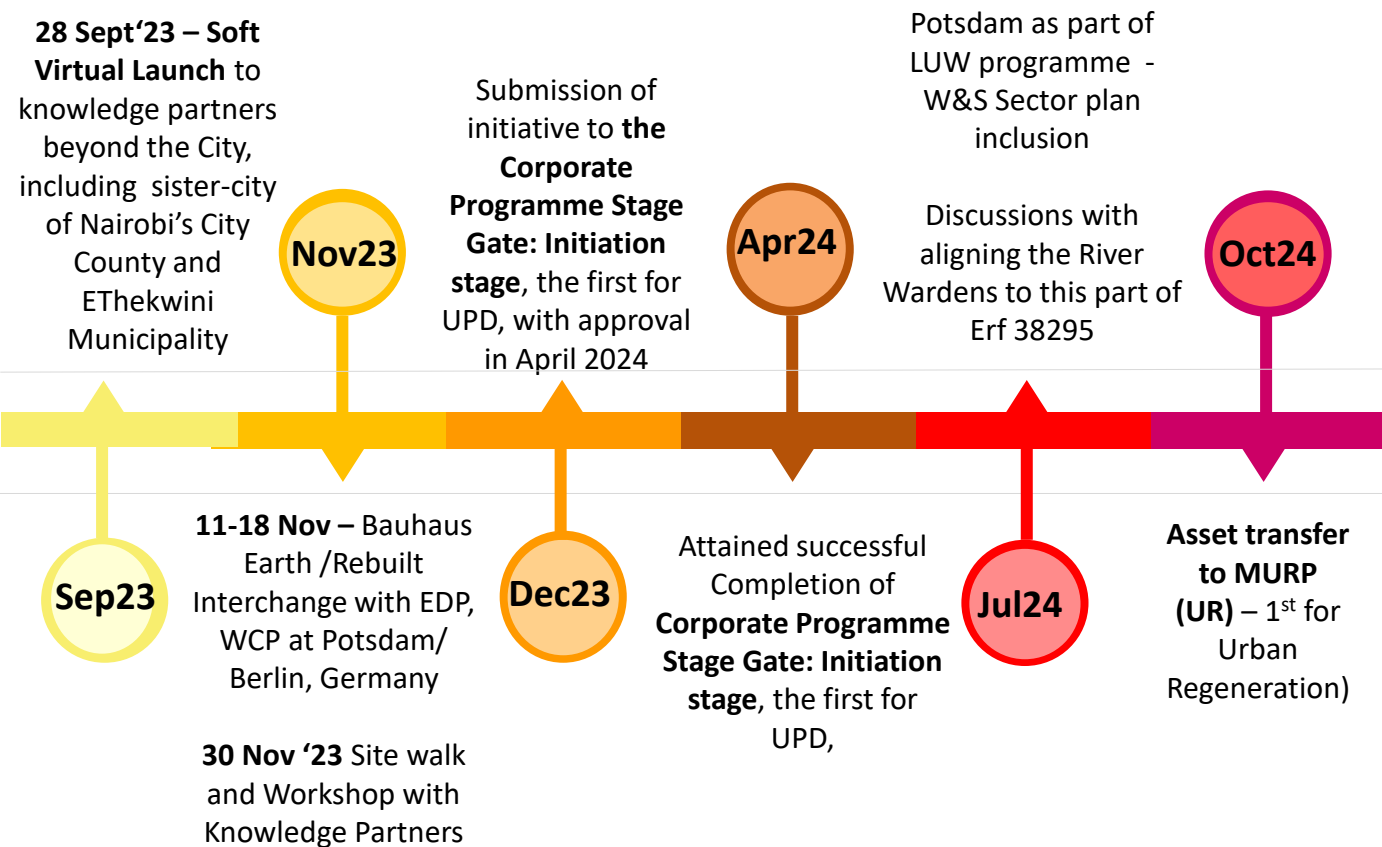
Scoping

	Project description / name	Wayne / Gehlshuis			Project location / project area / site and nearby wetlands		Project description / project area / site and nearby wetlands	
Project 4	Lower Liesbeek River Corridor Enhancement - Alma Rd to Observatory Rd	TED – possibly my new PO	Liesbeek	Ball	Liesbeek Canal from Alma Rd to Observatory Rd in Mowbray	59	Rehabilitate the river and adjacent wetlands, separate sections of the canal particularly through the Tractor Park, connect to rehabilitation work underway downstream. Improved NMT.	Scoping
Project 5	Disip (North) River Rehabilitation - Malibongwe Drive to Blaauwberg Rd	TDS / Ben	Disip (North)	Disip (North)	Reach from Malibongwe Drive to Blaauwberg Rd	104, 113	River rehabilitation and enhancement of the spaces adjacent to the river integrating into local urban form, connect to the Potsdam sustainability campus initiative and nature reserve.	Scoping
Project 6	Upper Kull River Corridor Enhancement - Lily Street through N1 to Bottlenay Rd	Mofosi / Johann	Kull	Kull	Reach from Lily Street to Bottlenay Rd	8, 21, 108, 112	River and wetland rehabilitation and enhancement of the spaces adjacent to the river integrating into local urban form.	Scoping

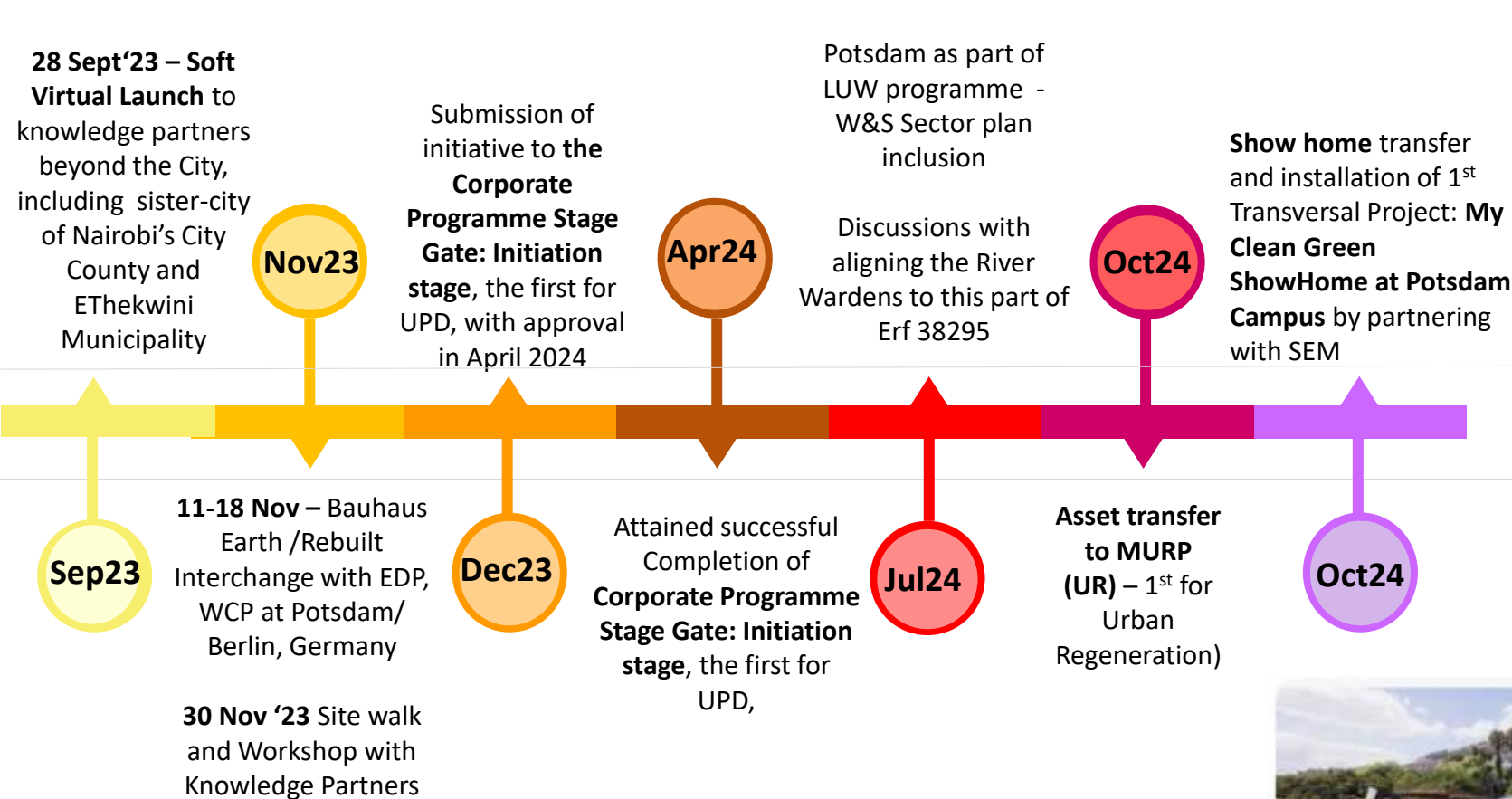
m as part of



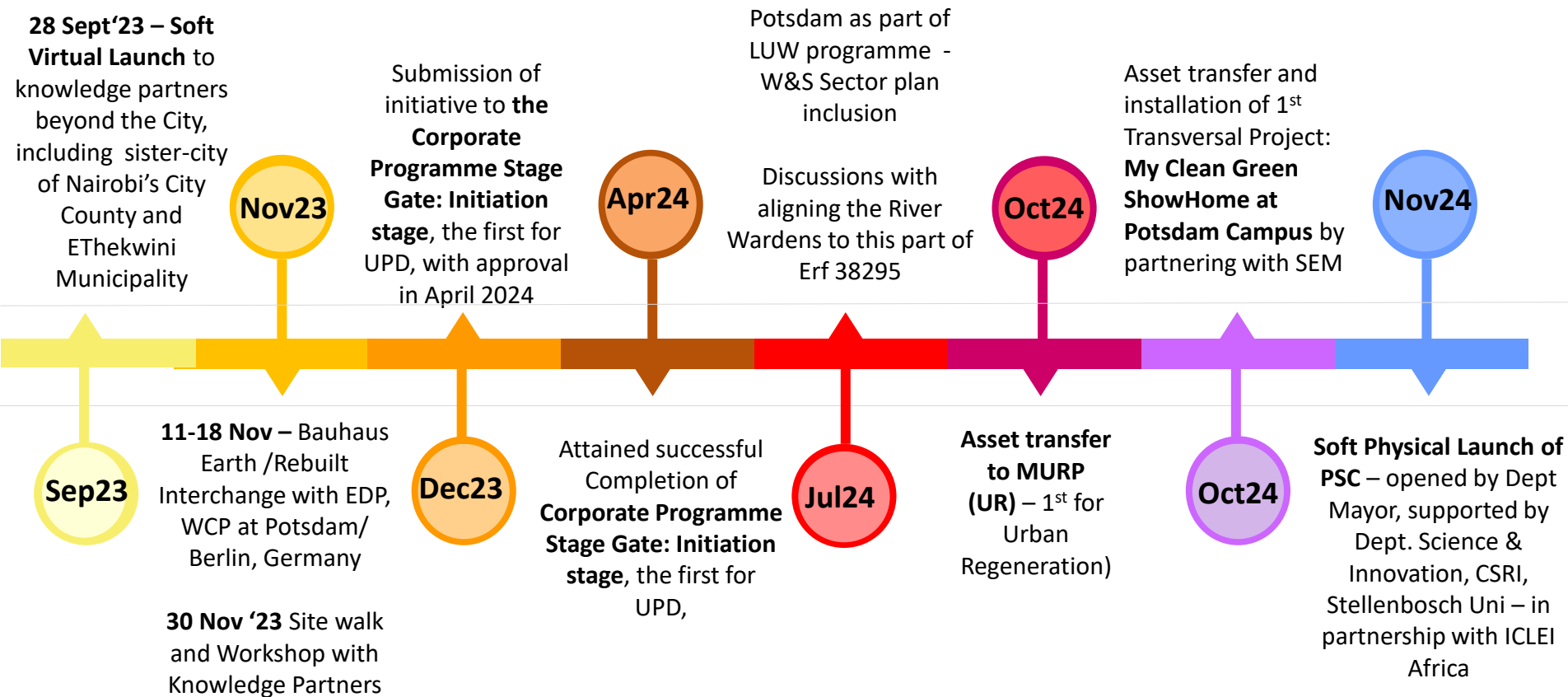
Progress in last 2 years



Progress in last 2 years

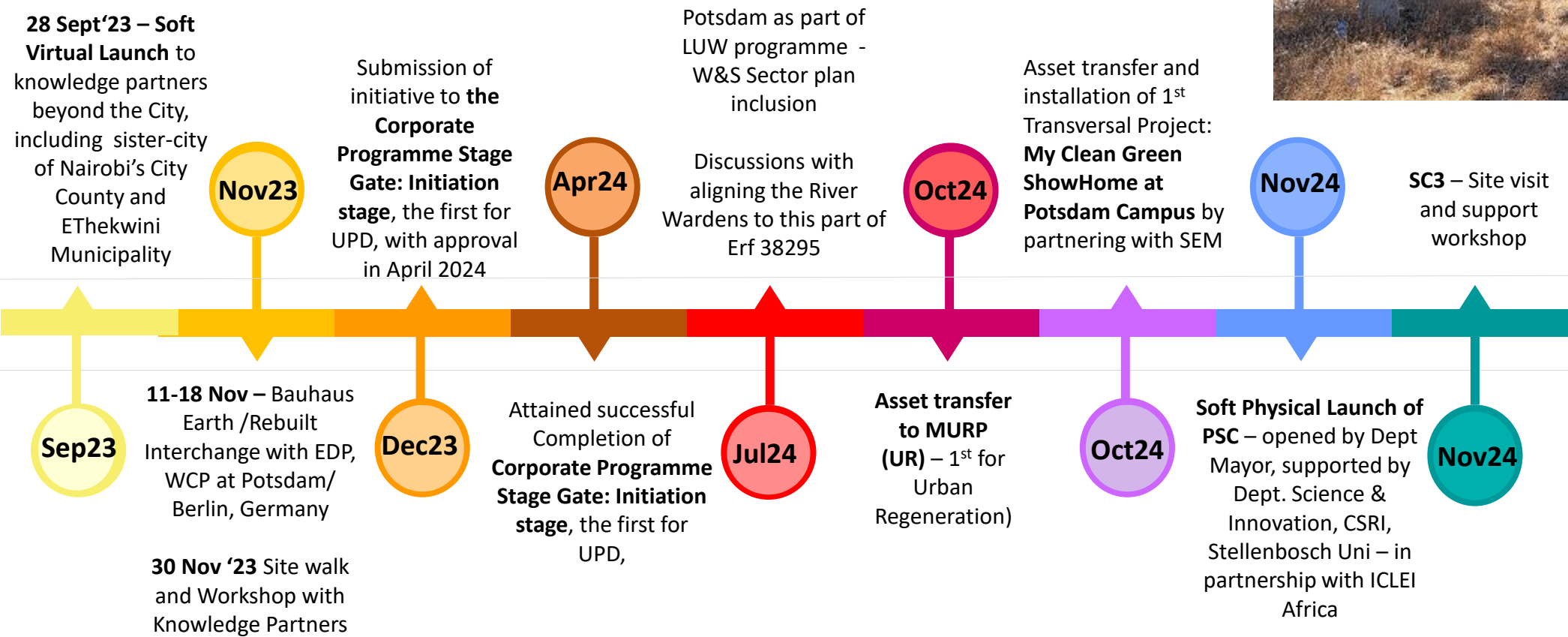


Progress in last 2 years

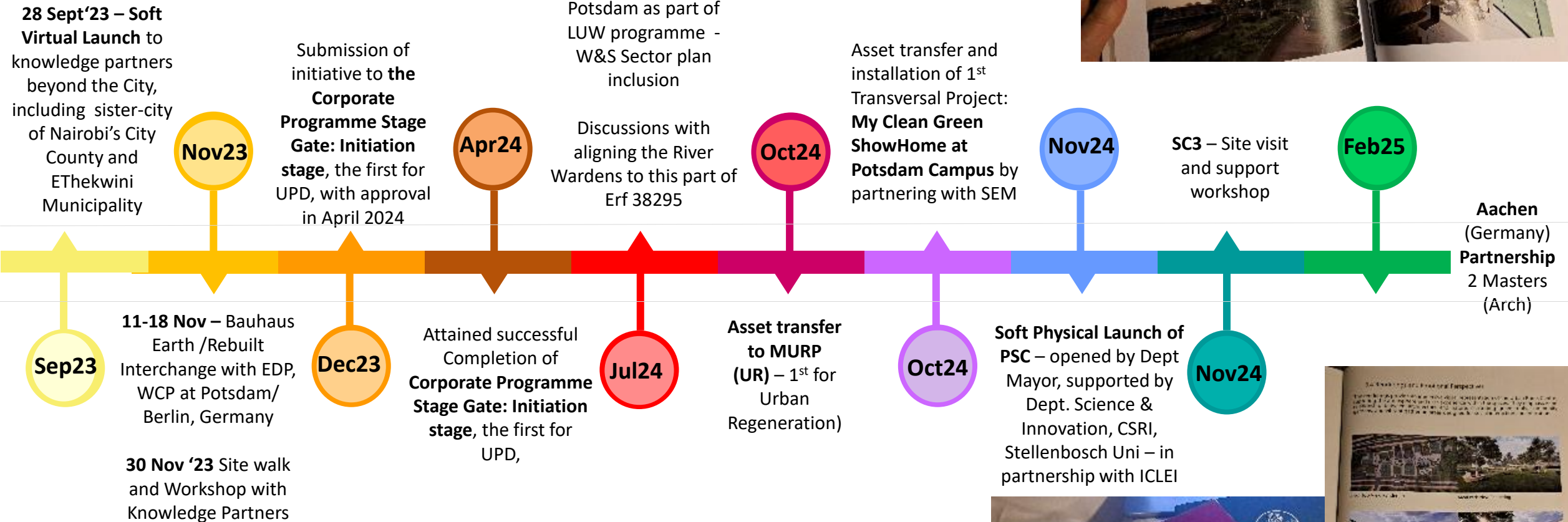


CITY OF CAPE TOWN
ISIXEKO SASEKAPA
STAD KAAPSTAD

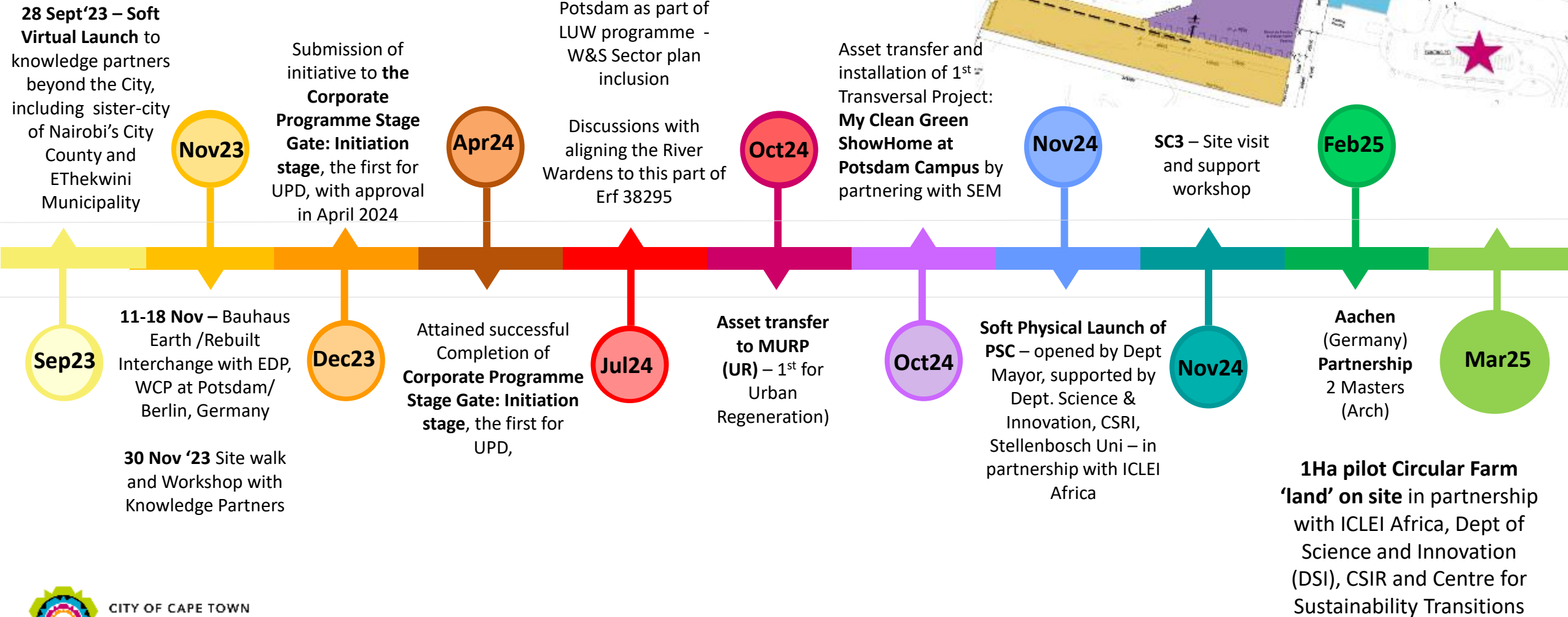
Progress in last 2 years



Progress in last 2 years



Progress in last 2 years

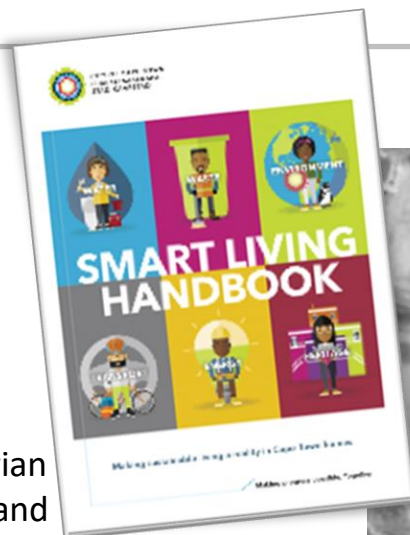


Going forward in partnership



A group of five people are riding horses along a dirt path. The riders are dressed in casual equestrian attire. The horses are of various breeds and colors, including white, grey, and brown. In the background, there is a large stone building with a dark roof, possibly a barn or stable, and a white van parked nearby. The surrounding area is green and hilly, suggesting a rural or park setting.

Equestrian centre and Smart Living



Buffer zone,
invasive
removals,
Envir Educ



Going forward in partnership



Partnership re utilisation of asset (for BoxYard), wayfinding



Potential for Innovation partnership – W&S

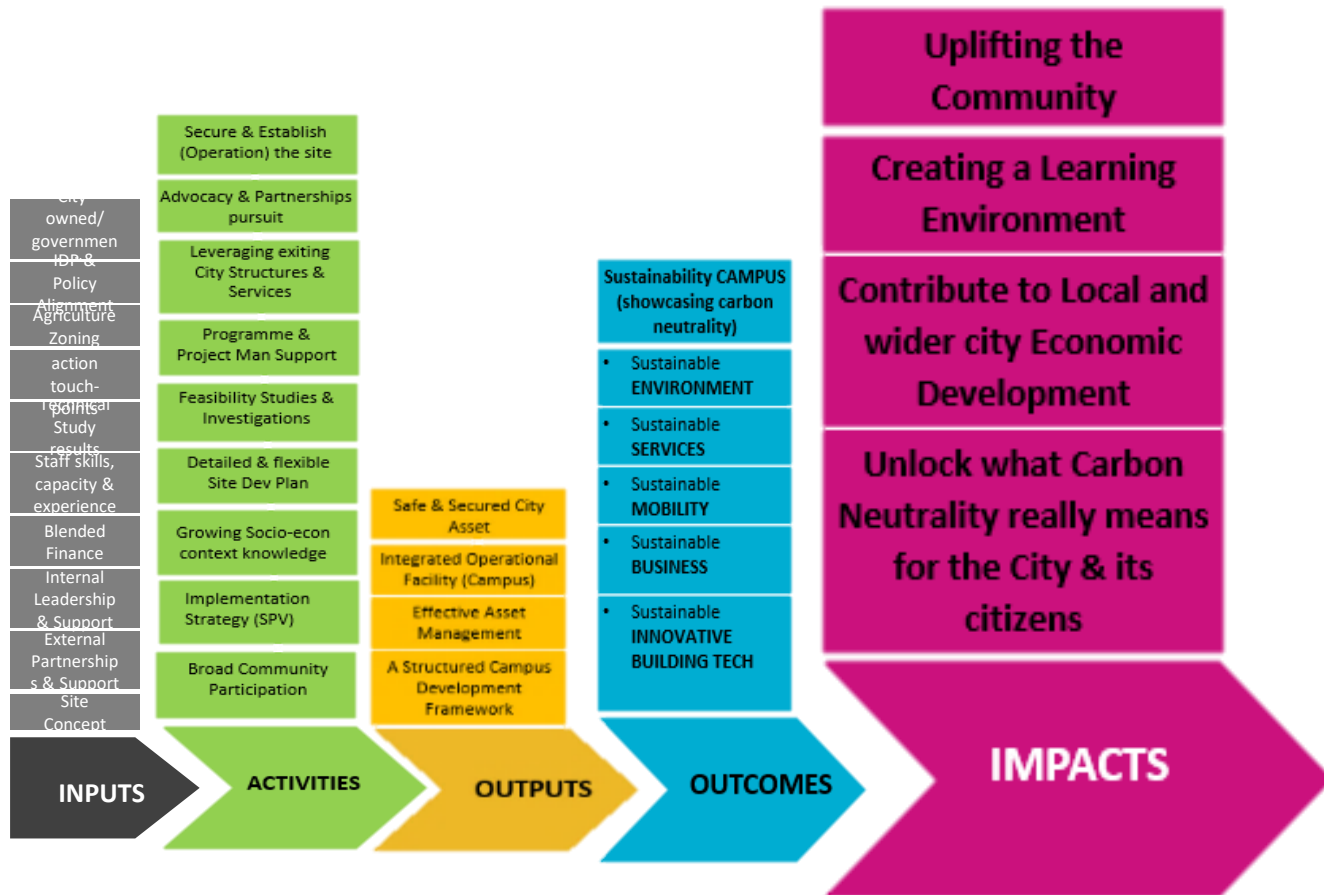
Introduction to the Liveable Urban Waterways (LUW) Programme

- The Water Strategy expresses the City's commitment to become a **water sensitive city by 2040**.
- The Liveable Urban Waterways (LUW) Programme was developed to move toward this vision.
- The LUW Programme:
 - Plans to systematically rehabilitate waterways across Cape Town.
 - Makes use of water sensitive design and nature based solutions to achieve multiple social and environmental benefits.

A Water Sensitive City is

Liveable • Resilient • Sustainable • Productive

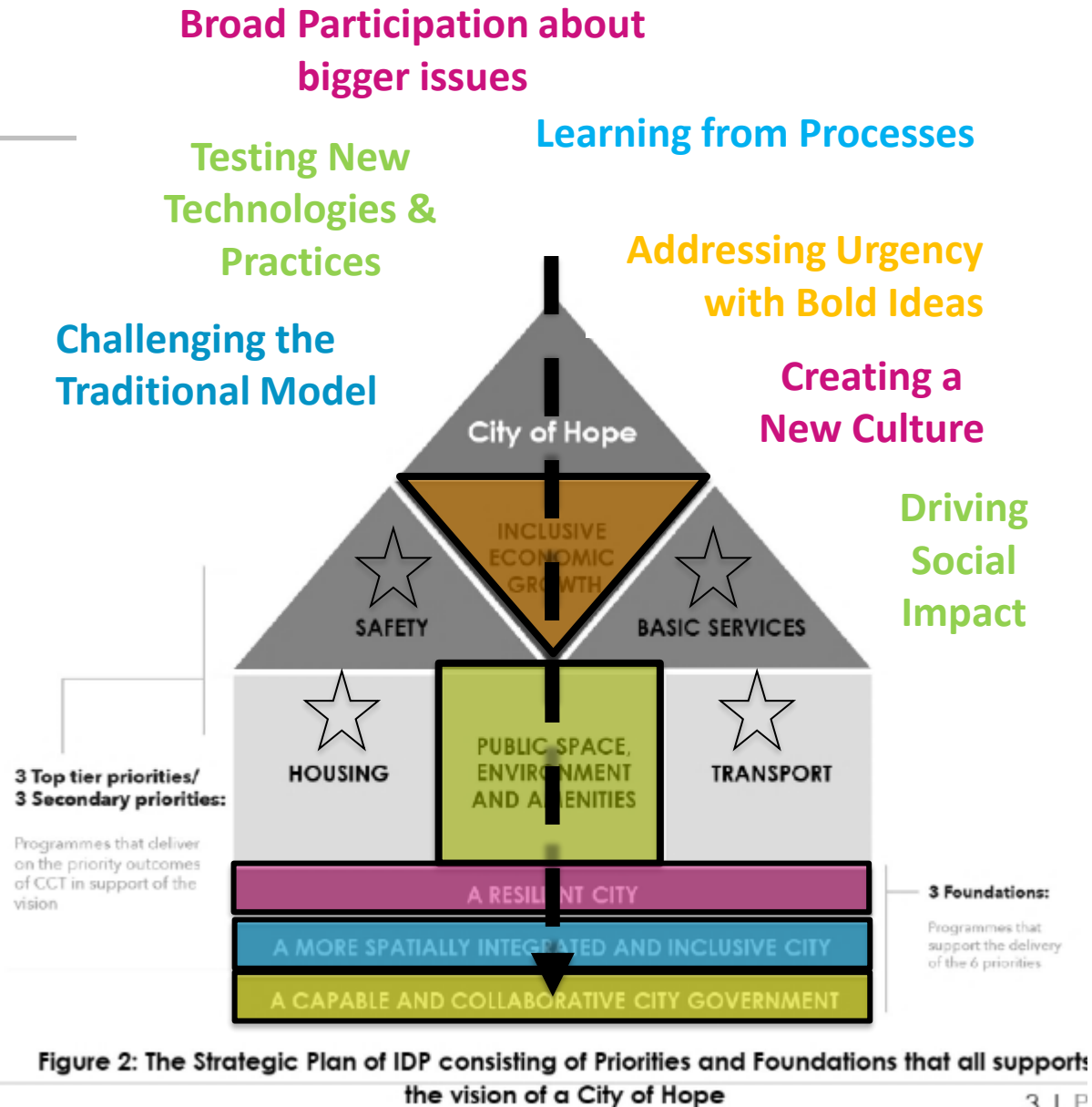
Case for Change – benefits and goals



Making Space for Thinking differently and working TOGETHER



CITY OF CAPE TOWN
ISIXEKO SASEKAPA
STAD KAAPSTAD



Recalibrating 'Sustainability' to sustain development

Innovation and experimentation is not about making something new...it's about **using what we have and applying it in a fresh, energizing way to make a meaningful impact!** It is circular in character and focus on continued improvement...regularly recalibrating...

If you want to go fast, go alone. If you want to go far, go together.

WE NEED BOTH!

AFRICAN PROVERB

Sandpit



Campus

MAKING PROGRESS POSSIBLE. TOGETHER.



..to recalibrate sustainably...



CITY OF CAPE TOWN
ISIXEKO SASEKAPA
STAD KAAPSTAD

Thank You

Liesel Kruger-Fountain
Urban Sustainability Unit
URBAN PLANNING AND DESIGN
SPATIAL PLANNING AND ENVIRONMENT

Making progress possible. Together.